

MICHEL LYSIGHT

# TRAFFIC

FOR CLARINET, STRING QUARTET AND PIANO

---

VIOLA

---

# TRAFFIC

Viola

for Clarinet, String Quartet and Piano

Michel LYSIGHT

## I

Moderato  $\text{♩} = \pm 72$

*p*

6

*f* *p*

A

11

B

16

21

26

C

31

36

*f* 2 Vln. II

D

43

**E**

48



53



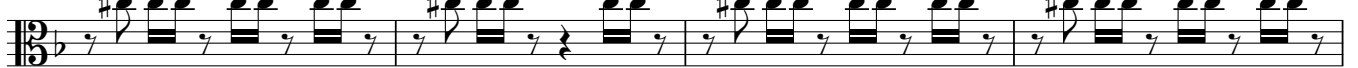
58

**F**

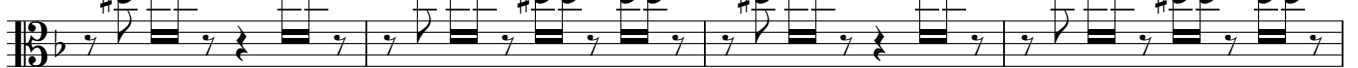
63



67



71



75



79

pizz.

**G**

Vln. II

arco sul ponticello



84



89

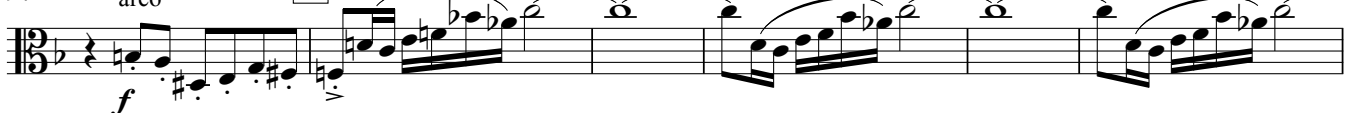
ord.

pizz.



94

arco

**H**

100



104 **I**



*fp* < *f*

110



*pp*

117



*cresc.*

123 **J** rit. - **K** Lento e molto liberamente  $\text{♩} = \pm 36$



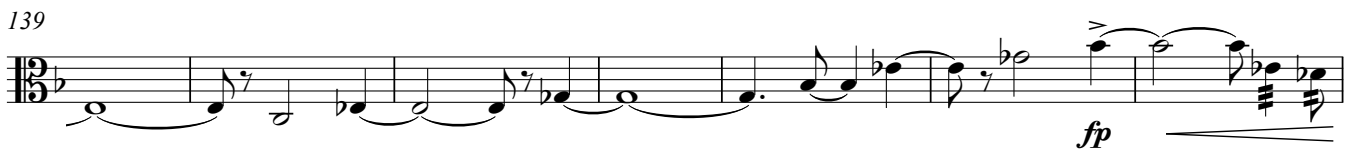
*ff* *pp* 3 cl.

132 **L** Tempo primo  $\text{♩} = \pm 72$



*p*

139



*fp*

146 **M**



*f* *mp*

151



156 **N**



161



165



*mf* *mp* *f* *fp* *cresc.* < *ff* pizz.

Viola

4

# II

Andante  $\text{♩} = \pm 66$   
(arco)

*mf*

4

A

*p*

7

*mf*

10

B

*pp*

16

Vln. I

C

*mp*

pizz.

19

*mf*

arco

23

*mf*

27

D

Più mosso  $\text{♩} = \pm 88$

E

*f*  $\rightarrow$  *pp*

*f*

35

F

*mf*

43 Pno. *mf* *ff*

49 *p* *mp* *cresc.*

54 **G** Allegro vivo ♩ = ± 152 *ff* *mf* Cl.

60

63

66 **H** *f* pizz.

70 arco sul ponticello

76

80 **I**

84 ord.

91 Vln. I

98 Vc. pizz. rit. . . . .

105 J Tempo primo ♩ = ± 66 arco mf 3

109

112 K 2 Vln. I fp pp

118 L pizz. Pno. arco mp

122 poco rit. . . . . 2 mf p pp

128 M Un poco più lento ♩ = ± 60 Cl. pizz. mp mf

133 arco sul tasto f pp ppp

## III

Allegro ♩ = ± 112

5

*f*

9

13

A

17

B

*p*

20

23

C

*f*

26

29

32

D

*p*

39

E

*fp* *ff* *mf*



